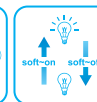
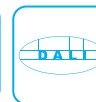
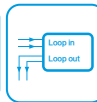
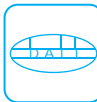
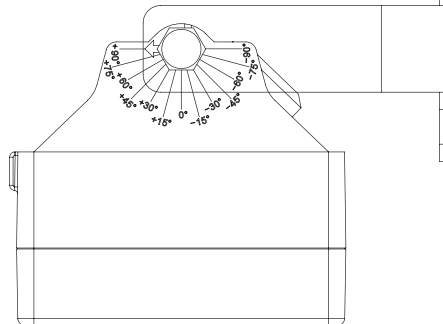
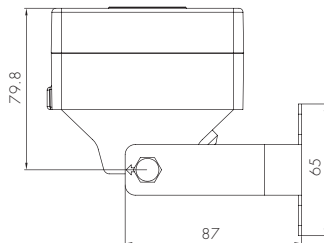
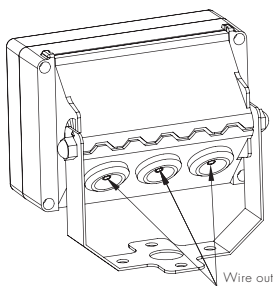
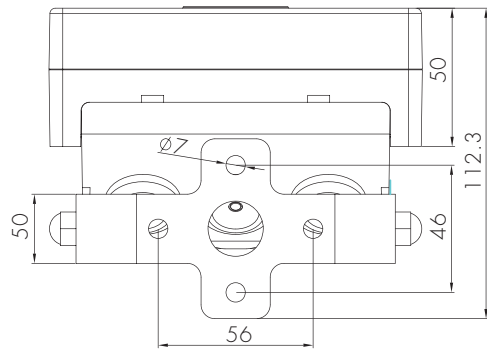
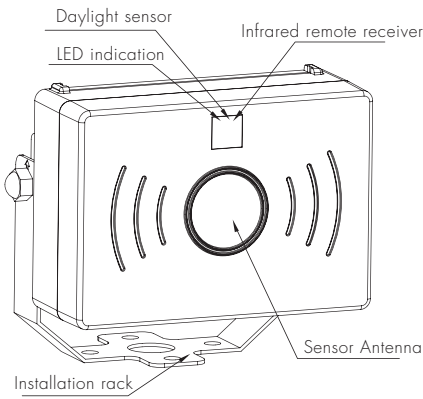
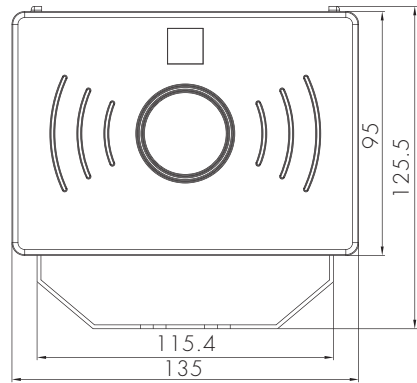
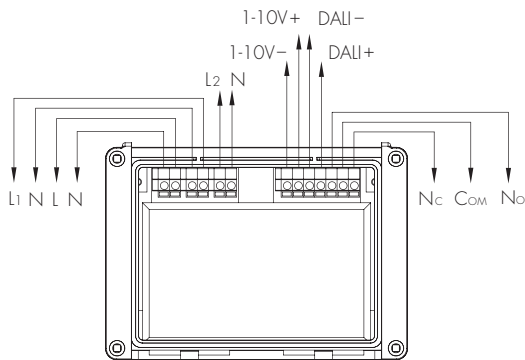


Microwave Aisle Sensor with Remote Control

Model: HCD450VDSRC
with HRC-05

IP65

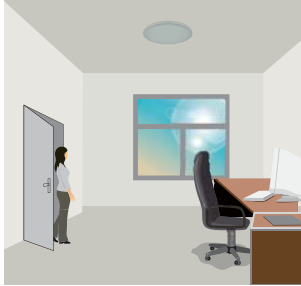


Functions and Options

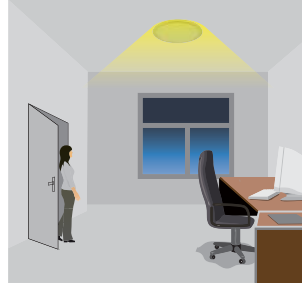
1 Tri-level Dimming Control (Corridor Function)

Same as Tridonic excel control gear, Hytronik builds this function inside the motion sensor to achieve tri-level dimming control, for some areas that require a light change notice before switch-off.

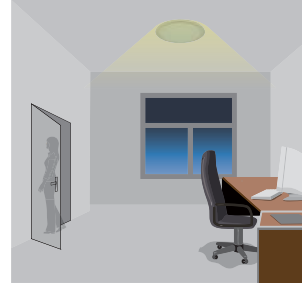
It offers 3 levels of light: 100%→dimmed light (10%, 20%,30%,50% optional)→off; and 2 periods of selectable waiting time: motion hold-time and stand-by period; selectable daylight threshold and choice of detection area.



With sufficient natural light, the light does not switch on when presence detected.



With insufficient natural light, the sensor switches on the light automatically when person enters the room.



People left, light dims to stand-by level (10% /20% /30% /50%, optional) after the hold-time.



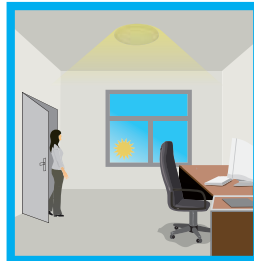
Light switches off automatically after the stand-by period elapsed.

Note: this function requires the max. dimming level setting on the remote control, press  to the max., otherwise it will behave like daylight harvesting. (daylight regulating)

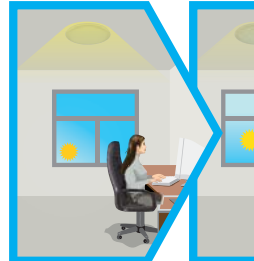
2 Daylight Harvest



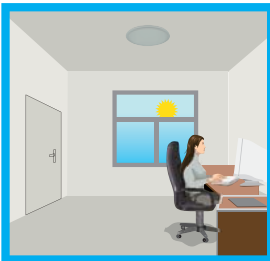
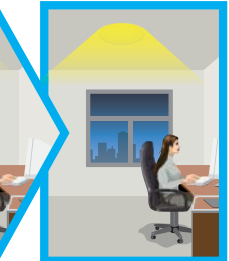
Light will not switch on when natural light is sufficient, even there is motion detected.



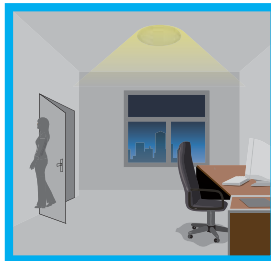
Light switches on automatically with presence and the natural light is insufficient.



The lamp turns on at full or dims to maintain the lux level, light output regulates according to the level of natural light available.



Light will be switched off when the ambient natural light is sufficient.



Light dims to stand-by brightness after hold-time. In stand-by period, the light stays on the selected minimum level.



Light switches off automatically after the stand-by period.

Note:

If the stand-by period is set at “+∞”, light will never switch off but dim to minimum level, even when natural light is sufficient.

3 DALI Control

This sensor contains an independent DALI power supply circuit, which broadcast command to the devices to achieve on/off and dimming function. Maximum 35 devices can be connected.

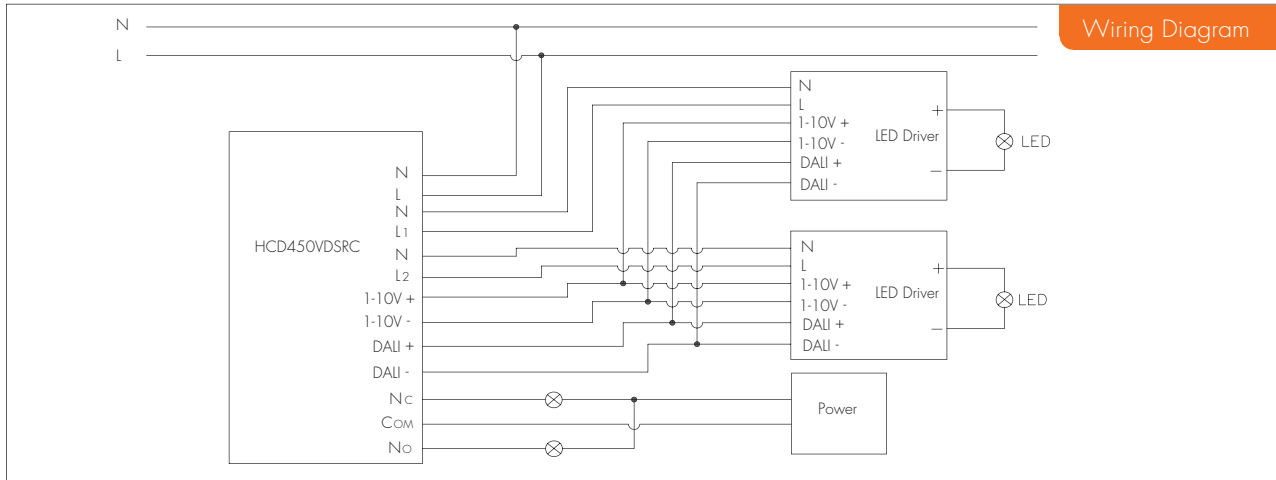
4 Loop-in and Loop-out Terminal

Double L N terminal makes it easy for wire loop-in and loop-out, and saves the cost of terminal block and assembly time.

5 Dry Contact Control

Sometimes also known as "Potential-Free" or "Volt-Free" sensor, the dry contact sensors from Hytronik are designed to operate with external monitoring systems. They operate as conventional occupancy sensors, with the output available as shown in the table on the right:

Detection State	Contacts Made
Presence	No - Com
Absence	Nc - Com



Settings (Remote Control HRC-05)

ON/OFF Permanent ON/OFF function

Press the "ON/OFF" button, the light goes to permanent on or permanent off mode, sensor is disabled.
* Press "Auto Mode", "RESET" or "Scene mode" buttons to quit from this mode.

Auto Mode Sensor mode

Press "Auto Mode" button, the sensor starts to work and all settings remain the same as the latest status before the light was switched on/off.

RESET Reset function

Press "RESET" button, all settings go back to the values as below:
 Detection range: 100% Hold-time: 5min Stand-by period: 10min
 Stand-by dimming level: 10% Daylight sensor: disabled

Dim +/- Dim +/-

Long press "Dim +" or "Dim -" to adjust the light brightness during hold-time. "+" means dimming up, "-" means dimming down.

TEST 2s Test mode

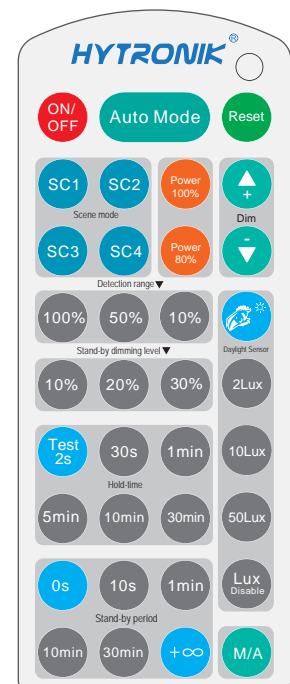
The button "Test 2s" is for testing purpose only. The sensor goes to test mode (hold-time is 2s) automatically after commissioning, meanwhile the stand-by period and daylight sensor are disabled.
* This mode can be ended by pressing "reset", or any button of "scene mode" and "hold time". The sensor setting is changed accordingly.

Power 100% Power 80% Power output

By pressing these two buttons, the output shifts between 80% (at initial 10,000 hours) and 100%, for energy saving purpose.

Ambient daylight threshold

Press this button, the latest surrounding lux value overwrites previous lux value learned, and is set as the daylight threshold. This feature enables the fixture to function well in any real application circumstance.



HRC-05

Note: the buzzer beeps one time when RC receives signal successfully.



Lux disable

Press this button, the built-in daylight sensor stops working, and all motion detected could turn on the lighting fixture, no matter how bright the natural light is.

Scene mode

There are 4 scene modes fixed program built-in the remote control to choose for different applications:

Scene options	Detection range	Hold-time	Stand-by period	Stand-by dimming level	Daylight sensor
SC1	100%	1min	10min	10%	2Lux
SC2	100%	5min	10min	10%	2Lux
SC3	100%	10min	30min	10%	10Lux
SC4	100%	10min	+∞	10%	50Lux

End-user can adjust hold-time/stand-by period/stand-by dimming level/ daylight sensor via the remote control. The latest setting controls.

Detection range

Press the buttons of "detection range" to set detection range at 10% / 50% / 100%.

Hold-time

Press the buttons of "hold-time" to set hold-time at 30s / 1min / 5min / 10min / 30min.

Daylight sensor

Press the buttons of "daylight sensor" to set daylight threshold at 2Lux / 10Lux / 50Lux.

Stand-by dimming level

Press the buttons of "stand-by dimming level" to set the stand-by dimming level at 10% / 20% / 30%.

Stand-by period (Corridor Function)

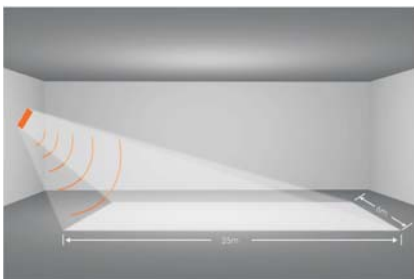
Press the buttons of "stand-by period" to set stand-by period at 0s / 10s / 1min / 10min / 30min / +∞.

M/A Manual Override / Absence Detection

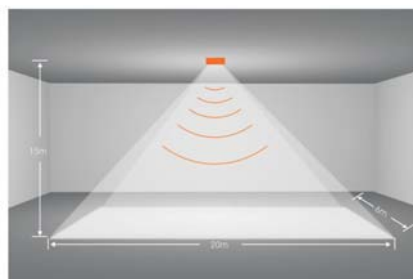
Button "M/A" is disabled.

Note: "0s" means on/off control; "+∞" means bi-level dimming control, light never switches off when daylight sensor is disabled.

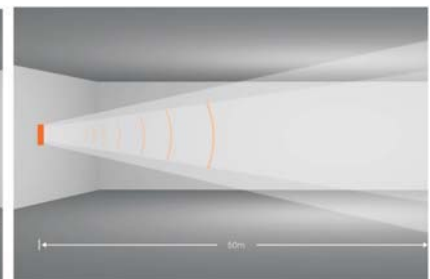
Detection Pattern



25mx6m coverage @ 8m mounting height



25mx6m coverage @ 15m mounting height



50m detection length @ 5m mounting height

Technical Data

Operating voltage	120-277VAC
Switched power	2 x 2000W (resistive) 2 x 800W (capacitive)
Stand-by power	< 1W
Detection area	10% / 50% / 100%
Hold-time	Test 2s / 30s / 1min / 5min / 10min / 30min
Stand-by period	0s / 10s / 1min / 10min / 30min / +∞
Stand-by dimming level	10% / 20% / 30%
Daylight threshold	2Lux / 10Lux / 50Lux, disable
Microwave frequency	10.525GHz +/- 75MHz
Microwave power	< 0.2mW
Mounting height	Max. 15m
Operating temperature	-20°C ~ +50°C
IP rating	IP54
Certificate	Semko, CB, EMC, CE, R&TTE, SAA