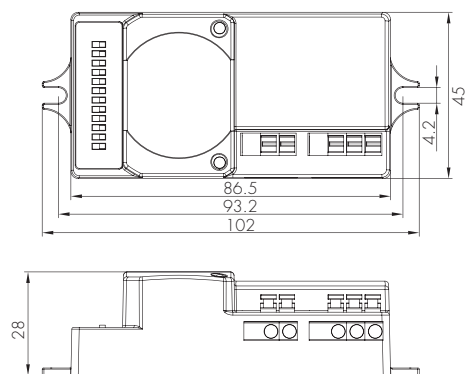
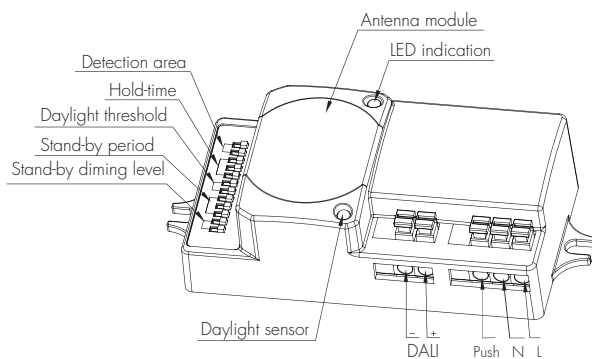
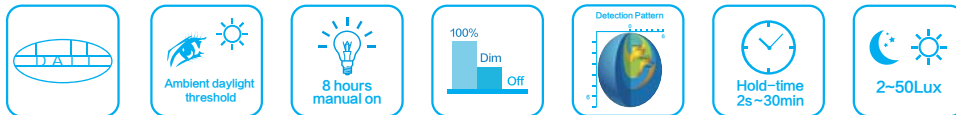


DALI Sensor Independent Version

Model: HCD418



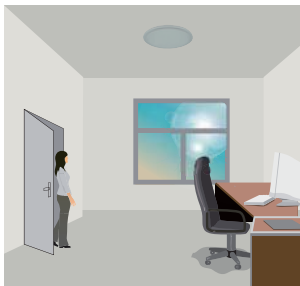
1-10V ballast/driver is being replaced by DALI ballast/driver. This sensor contains a DALI power supply circuit, which gives DALI output to the driver to carry out the sensor on/off and dimming command.



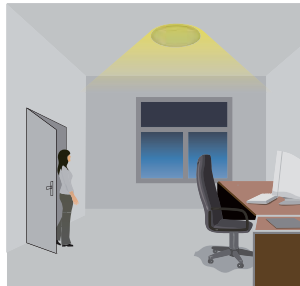
Functions and Options

1 Tri-level control (Corridor Function)

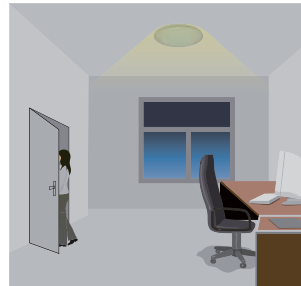
Same as Tridonic excel control gear, Hytronik builds this function inside the motion sensor to achieve tri-level control, for some areas require a light change notice before switch-off. It offers 3 levels of light: 100%-->dimmed light (5%, 10%, 20%, 50% optional)-->off; and 2 periods of selectable waiting time: motion hold-time and stand-by period; selectable daylight threshold and choice of detection area.



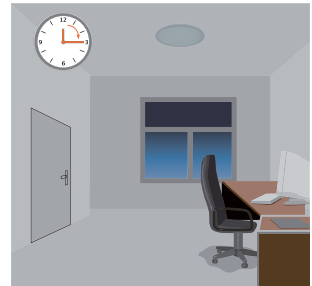
With sufficient natural light, the light does not switch on when presence detected.



With sufficient natural light, the sensor switches on the light automatically when person enters the room.



People left, light dims to 5%, 10%, 20%, 50% (optional) stand-by level after the hold-time.



Light switches off automatically after the stand-by period elapsed.

2 Manual Override

This sensor reserves the access of manual override function for end-user to switch on/off, or adjust the brightness by push-switch, which makes the product more user-friendly and offers more options to fit for some extra-ordinary demands:

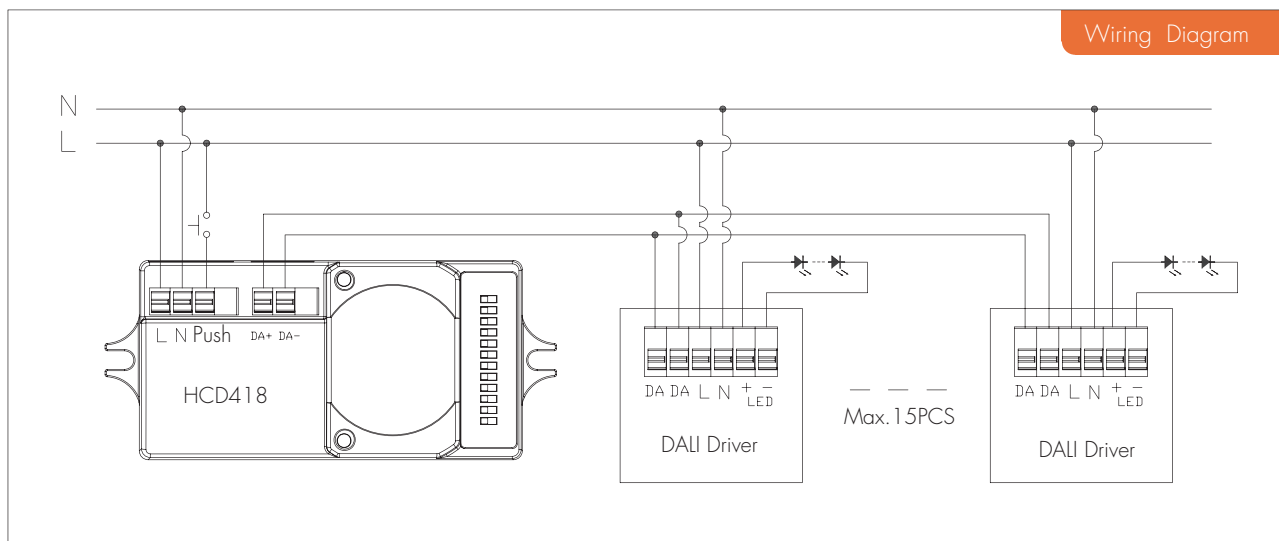
* Short push (<1s): on/off function;

On → off: the light turns off immediately and can not be lightened for a certain time (equals to hold-time preset) even movement is detected.
After this period, the sensor goes to sensor mode.

Off → on: the light turns on and goes to sensor mode, no matter if ambient Lux level exceeds the daylight threshold or not.

* Long push (>1s): dim up/down the hold-time brightness between 10% and 100%.

Note: if end-user do not want this manual override function, just leave the "push" terminal alone and don't connect it to any wire.

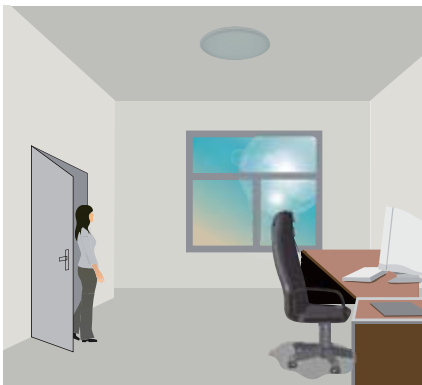


3 Semi-auto mode (absence detection) Function

It is easy to forget to switch off the light, in office, corridor, even at home. And in many other cases, people do not want to have a sensor to automatically switch on the light, for example, when people just quickly pass-by, there is no need to have the light on.

The solution is to apply this "absence detector": motion sensor is employed, but only activated on the manual press of the push switch, light keeps on in the presence, and dimmed down in the absence, and eventually switch off in the long absence.

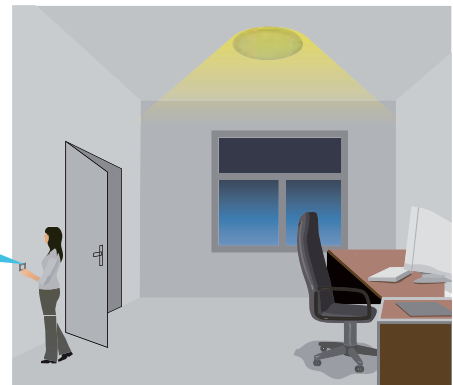
It is a good combination of sensor automation and manual override control, to have the maximum energy saving, and at the same time, to keep efficient and comfortable lighting.



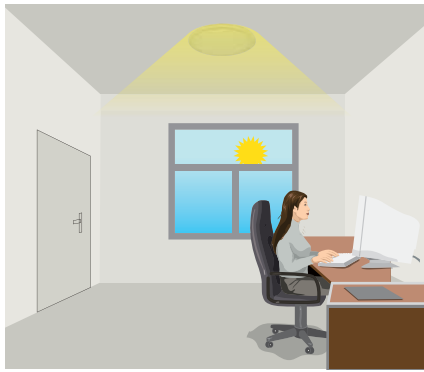
Light does not switch on when presence detected.



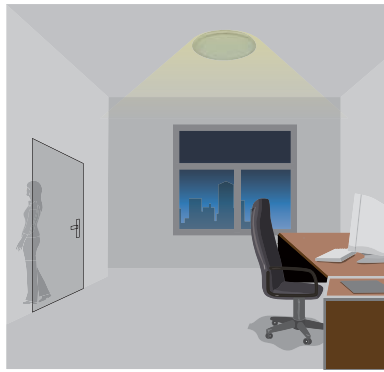
Short push to activate the sensor and switch on the light



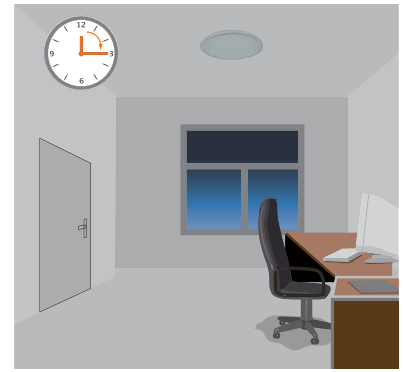
With the manual short press on the push-switch, the sensor is activated and switches on the light.



Light keeps on during the presence.



People left, light dims to 10%/20%/30%/50% (optional) stand-by level after the hold-time.



Light switches off automatically after the stand-by period elapsed.

Note: enduser can choose either **2** or **3** for the push function. (software pre-defined in factory). Default function is manual override.

4 8H Manual on Mode for LED Lamp

Rapidly turn off/on the power supply three times within 3 seconds, the light will be 100% on for 8 hours, and then goes to sensor mode automatically after 8 hours. Useful when sensor function is not needed in special occasion.

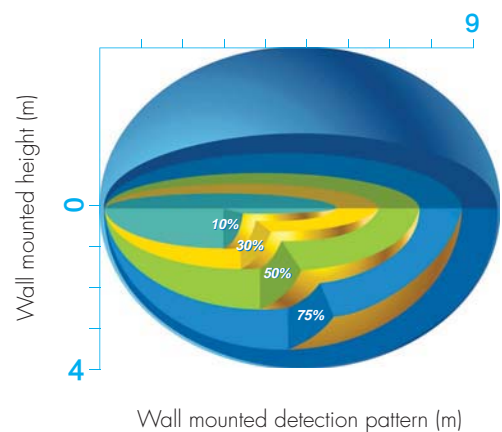
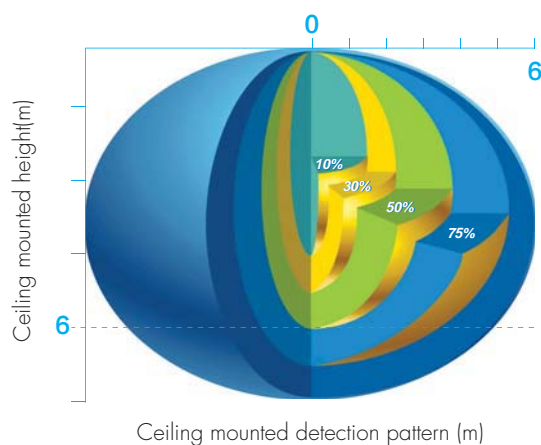
Note: this 8H manual on mode can be cancelled by turning off/on the power supply one time within 1 second.

5 Ambient Daylight Threshold

Switch the power supply to the sensor two times within 2 seconds, the sensor can set the ambient lux level as the new threshold. Both the settings on DIP switch and the ambient lux threshold learned can overwrite each other.

This feature enables the daylight sensor to be commissioned to the environment in which it is installed. The latest action controls. (More details of the operation procedure please refer to user manual).

Detection Pattern



Settings

1 Detection area

Detection area can be reduced by selecting the combination on the DIP switches to fit precisely for each specific application.

	1	2	
I	●	●	100%
II	●	○	75%
III	○	●	50%
IV	○	○	10%



I – 100%
II – 75%
III – 50%
IV – 10%

2 Hold-time

Hold-time means the time period you would like to keep the lamp on 100% after the person has left the detection area.

	1	2	3	
I	●	●	●	Test
II	●	●	○	30s
III	●	○	●	1min
IV	●	○	○	5min
V	○	●	●	10min
VI	○	●	○	20min
VII	○	○	○	30min



I – Test
II – 30s
III – 1min
IV – 5min
V – 10min
VI – 20min
VII – 30min

3 Daylight sensor

The daylight threshold can be set on DIP switches, to fit for particular application.

	1	2	
I	●	●	Disable
II	●	○	50Lux
III	○	●	10Lux
IV	○	○	2 Lux



I – Disable
II – 50Lux
III – 10Lux
IV – 2Lux

4 Stand-by period (corridor function)

This is the time period you would like to keep at the low light output level before it is completely switched off in the long absence of people.

Note: "0s" means on/off control;
"+∞" means bi-level dimming control, fixture never switches off.

	1	2	3	
I	●	●	●	0s
II	●	●	○	10s
III	●	○	●	1min
IV	●	○	○	5min
V	○	●	●	10min
VI	○	●	○	30min
VII	○	○	●	1h
VIII	○	○	○	+∞



I – 0s
II – 10s
III – 1min
IV – 5min
V – 10min
VI – 30min
VII – 1h
VIII – +∞

5 Stand-by dimming level

This is the dimmed low light output level you would like to have after the holdtime in the absence of people.

	1	2	
I	●	●	5%
II	●	○	10%
III	○	●	20%
IV	○	○	50%



I – 5%
II – 10%
III – 20%
IV – 50%

Technical Data

Operating voltage	120-277VAC
Switched power	Max. 15 devices; Max.30mA
Stand-by power	< 1w
Warming-up time	20s
Detection area	10/50/75/100%, can be customized
Hold-time	Test/30s/1min/5min/10min/20min/30min, can be customized
Stand-by period	0s/10s/1min/5min/10min/30min/1h/+∞ can be customized
Stand-by dimming level	5%/10%/20%/50% can be customized
Daylight threshold	2~50lux, disable, can be customized
Microwave frequency	5.8GHz+/-75MHz
Microwave power	<0.2mw
Detection range	Max. (ØxH): 12m x 6m
Detection angle	30°~150°
Mounting height	Max.6m
Operating temperature	-35°C ~ +70°C
IP rating	IP20 IP65 (mounted in Hytronik special box)
Certificate	Semko, CB, EMC, CE, R&TTE, SAA